

CONTROL ROOM SOLUTIONS DESIGN4U-DELFT



CONTROL ROOM SOLUTIONS
WWW.DESIGN4U.NL

INTERIOR LIGHTING ERGONOMICS

CONTROL ROOM SOLUTIONS



Design4U has created its own line of furniture for the control room environment. The development of this furniture is based on many years of experience and is still expanding. Adapted to the wishes and demands of the customers, Design4U will design the best solutions for your environment. A control room changes through the years due to new techniques (TFT screens), other insights and task management. **Design4U** started early with a modular system able to expand, but also able to decrease dependent on the demands.

Design4U has completed the design of the control room for many small and large companies. Design4U is not just looking at the furniture, but it can steer and plan almost any aspect of the modern control room.

This is about the design process of the control room in relation to the ergonomic of the interface (input, output, relations to other departments), where human factors are essential in the early stage of design.

- inventory of the wishes and demands
- design (technical) space, technical advice, advice on architectural solutions
- design work space, lighting, interior (upholstery- and floor covering), colours
- placing furniture, work space, lockers, toilet room
- 3D presentation of the designs, mock-up, technical drawings, planning
- implementation in co-operation with technical services and external suppliers



This brochure is mainly dedicated to the modular furniture of **Design4U**. The separate parts will be described and some samples will be presented.

Special furniture

As the furniture is modular based, most applications will fit. Nevertheless special designed furniture may suit your needs better. Form and function can be adapted as you wish. For more detailed information you can contact us. (info@design4u.nl).



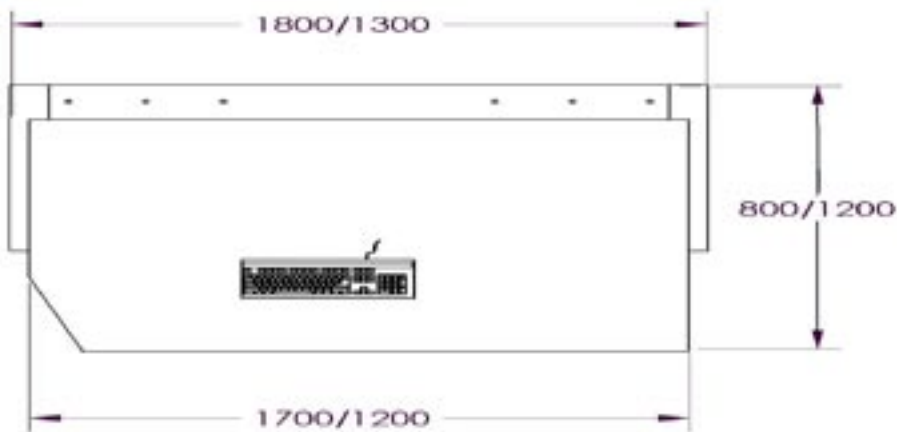
FURNITURE

CONTROL ROOM SOLUTIONS



The furniture consists of two powder coated metal legs and in between a connection bar. The latter is meant for holding a cable gutter or the like. The large desktop of 30 mm high pressure laminated multiplex completes the basic element. The desktop is available in many colours and designs. The desktop is finished for heavy use and can be cleaned easily. No wearing after many years of use is guaranteed. Due to the modular build construction any part can be replaced when damaged.

The basic furniture can be expanded with several technical cabinets under the table top and between the legs. These spaces can be customised for optimal use of space. Access to these cabinets can be on the front and/or rear side. The technical cabinets are also powder coated and are equipped with earth points. The modular designed build of the furniture makes an exchange of options and parts possible. The technical cabinet is limited by the space needed for the operator, but can be extended if necessary.

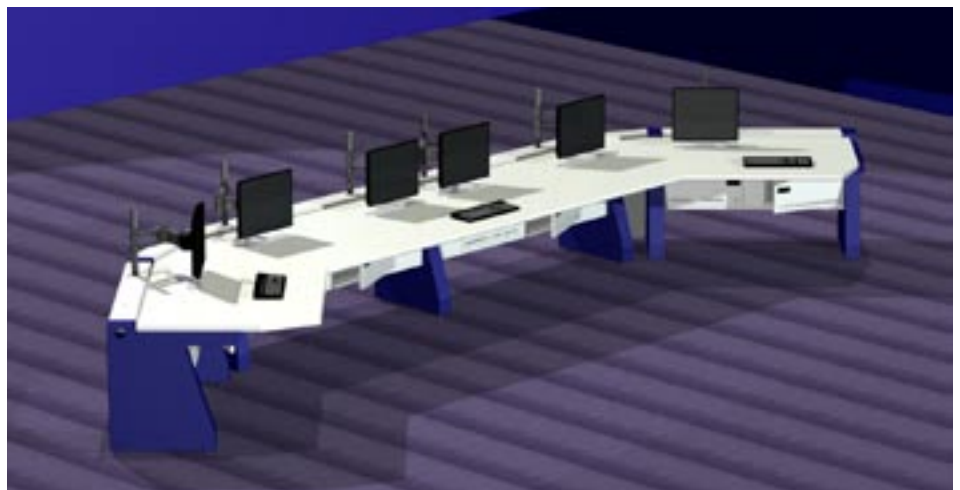


Measures

The standard measures are based on the table top of 1200 and 1700 mm per element. Depth of the metal parts are fixed and are 800 mm. The table top depth can be chosen. Work space of 1200 mm is used, but also 800 mm is possible, even 1600 mm.

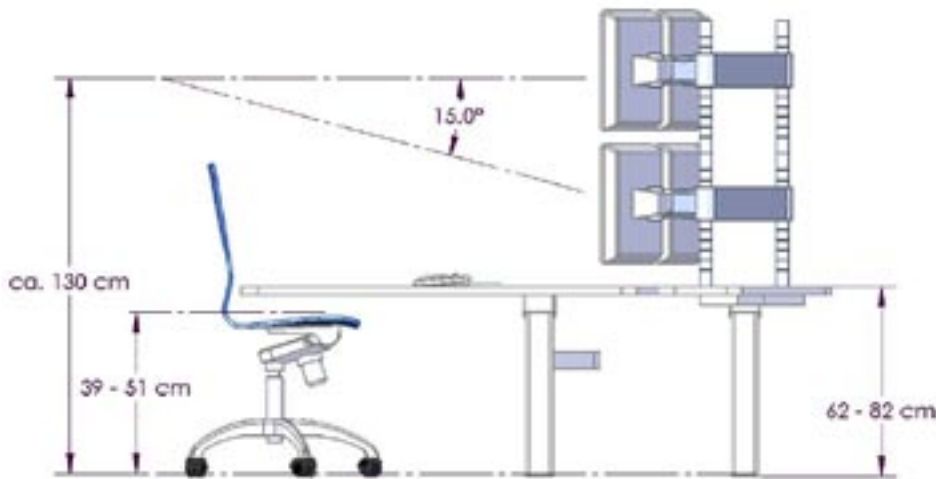
Form

The legs are the basic elements for the modular form. The straight position is the most simple one, but a combination with a 45 degree angle leg makes an option that is suitable for one or two operators. The desks can be used as stand alone or as a combination of coupled desks. Another combination will be possible after a couple of years, without buying a whole new control room desk. All elements can be purchased any time. It is also possible to change the colour setting.



HEIGHT ADJUSTMENT MONITOR ARM

CONTROL ROOM SOLUTIONS



Height adjustment

The standard height of the elements is 750 mm table top - floor. If two or more operators are working on the same console, this is the optimal solution. For height adjustments for separated desk tops we can offer several solutions.

Electrical height adjustment table top

In this case only the table top will be height adjusted. The height adjustment is from 620 to 820 mm in our basic type. Due to this adjustment a reduced height of the cabinet under the console is necessary. If you prefer height adjustment for several coupled table tops, a minimal distance between the table tops of 50 mm is advised.

Electrical height adjustment module



weight of modules hydraulic or electrical height adjustment is advised.

Module with sit and stand height adjustment

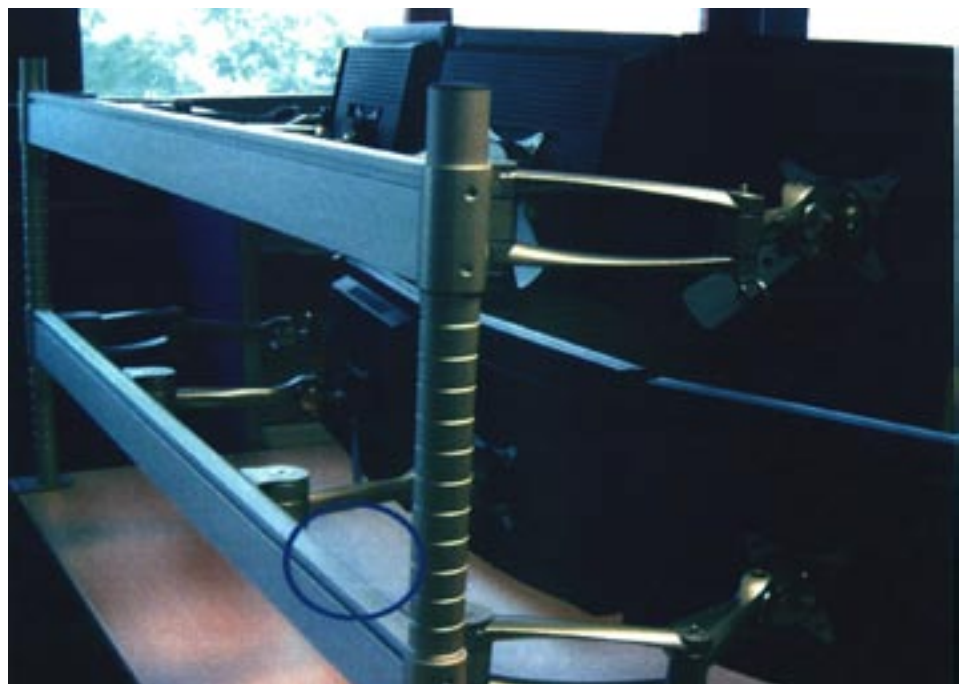
It is also possible to use a module with a height adjustment between 620 to 1500 mm. The operator can do his or her work in upright (standing)

the wo

Please contact us for the latest news on these consoles (info@design4u.nl)!

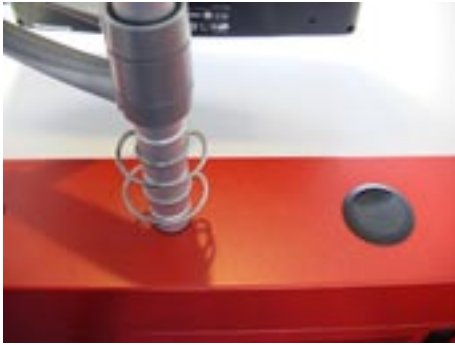
Mounting TFT screens

Screens (TFT and CRT) can be placed without any further applications on the desk top. We can offer almost any type of mounting of screens to the desktop. The standard product we use is available in many different types and can also be modified by our technical workshop. Larger screens are mounted using the standard mounting fixing of the screen producer. These standard brackets can be adjusted by our workshop. Our furniture has all standard mounting holes for our standard tft screen arms and poles.



BUILD-INN EQUIPMENT CHAIRS ISO-STANDARDS

CONTROL ROOM SOLUTIONS



Build-inn equipment, cable gutter, power connection

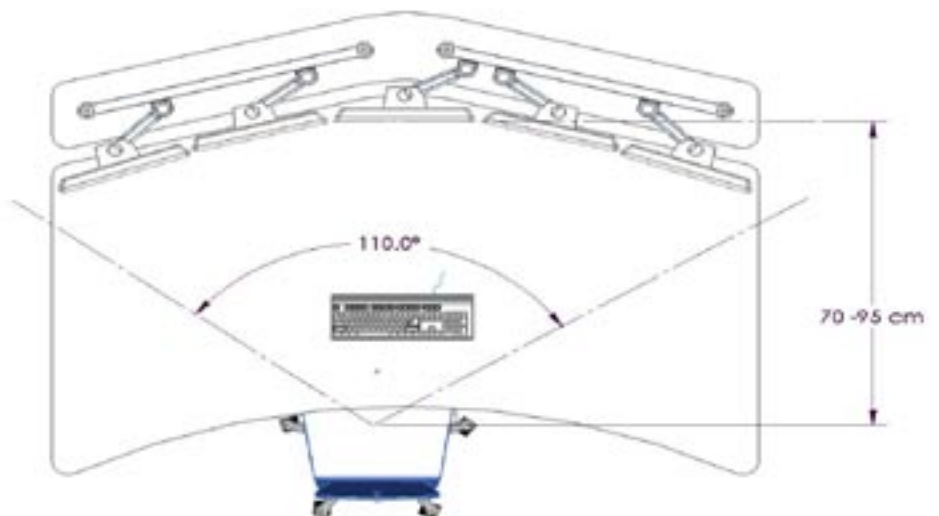
The console has standard holes for cables. These cables can be laid in cable gutters and they can be lead through the console, or to the outside (down, up or sideways).

The coupling component of the console has all cable holes to the table top. These holes are covered and have an opening of 60 mm.

Cable gutters can be placed under the desktop or in the metal reinforcement.

Chairs 24/7

Chairs are an important element in the well being of the operators in the control room area. Wear of the control room chair is often caused by the frequent use or misuse related to the interior of the room. Special 24/7 chairs can be installed dependent on the use, demands and wishes regarding the surrounding and environment of the control room. The life expectance of heavily used chairs is often limited to two years. Some of our chairs are guaranteed for five years.



Regulations, standards and laws

Furniture and chairs are made according to the latest standards and local demands for the use in control room environment. On demand **Design4U** will produce an ergonomic report according to the ISO/EN standards.

BASIC FURNITURE

CONTROL ROOM SOLUTIONS



Legs

Standard:

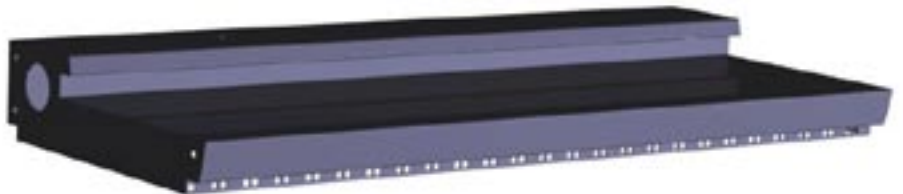
2 mm thick RAL powdercoated metal leg with feet, lockable cable guide and reinforced monitor support.

- 1 end leg, intermediate leg
 - 2 intermediate leg, also available as 600 mm model (dependent of desktop support)
 - 3 intermediate leg 45 degrees
 - 4 end leg, intermediate leg for height adjustment
 - 5 intermediate leg 45 degrees for height adjustment
 - 6 masking end leg
- order number: LEG001-RAL

Connection bar

2 mm thick RAL powdercoated metal connection bar with lockable cable guide and reinforced monitor support.

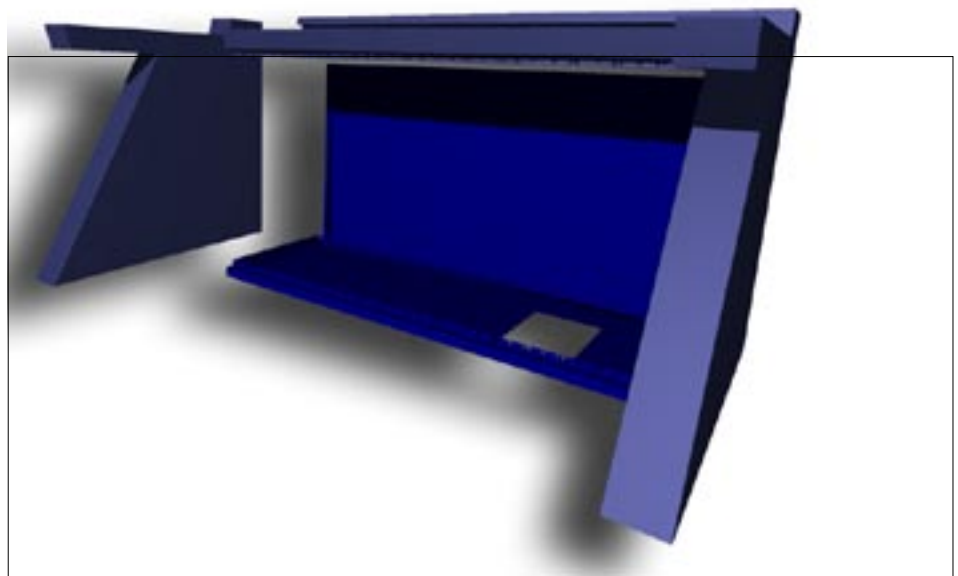
- 1 connection bar 1100 mm
 - 2 connection bar 1600 mm
- order number: CON001-RAL



Technical space

1,5 mm thick RAL powdercoated metal elements

- 1 bottom 1100 mm
- 2 bottom 1600 mm
- 3 intermediate ventilated 1100 mm
- 4 intermediate ventilated 1600 mm
- 5 front/rear panel 1100 x 400 mm
- 6 front/rear panel 1100 x 600 mm
- 7 front/rear panel 1600 x 400 mm
- 8 front/rear panel 1600 x 600 mm
- 9 door incl. screen. 600 x 600 mm
- 10 door incl. screen. 500 x 600 mm
- 11 intermediate for doors
- 12 extra intermediate 1600 mm doors
- 13 door 1100 x 500 mm
- 14 door 1600 x 500 mm
- 15 lock
- 16 lock with keys



BASIC FURNITURE

CONTROL ROOM SOLUTIONS

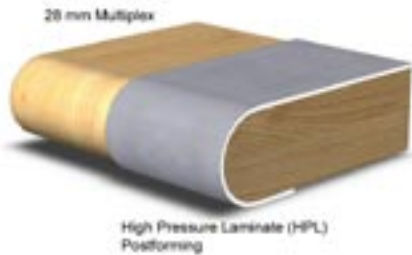


Table top

The table top is available in many different options and dependent on the final configuration. The 30 mm multiplex top is made with rounded front and reinforced sides. The High Pressure Laminate is especially designed for these applications and custom made. Standard this table top has a 1200 mm depth. The table top is connected with a special designed connection underneath the wooden element. The special design of the modules makes that the table top is enclosed in the module and can be fixated without screws.

Options

- 1 simple
- 2 double
- 3 double facing each other
- 4 tripple
- 5 multiple inner curve
- 6 multiple outer curve

Option 3



Optie 4



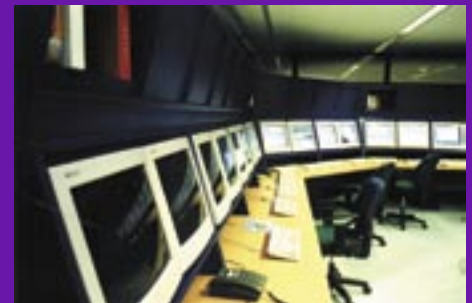
REFERENCES

CONTROL ROOM SOLUTIONS



references:
AWW
Cargill
Cerestar
DHV Almelo
Dow Benelux
Vopak
DSM
ExxonMobile
EMO
Eandis
University of Amsterdam
Ergotech
Friesland Bank
General Electric
Interpay
Royal Haskoning
TNO
Parking Delft

...and many others



Design4U BV
Buitenwatersloot 75A
2613 TB DELFT
P.O. Box 3051
2601 DB DELFT
The Netherlands
tel. +31 15 214 89 03
fax +31 15 214 33 23
e-mail: info@design4u.nl
www.controlroomdesign.eu

Design4U
control room solutions